



MONTHLY MEMBERSHIP PROGRESS REPORT

District 1 BK

Results as of: 1/31/2017

GMT: THOMAS MATNEY

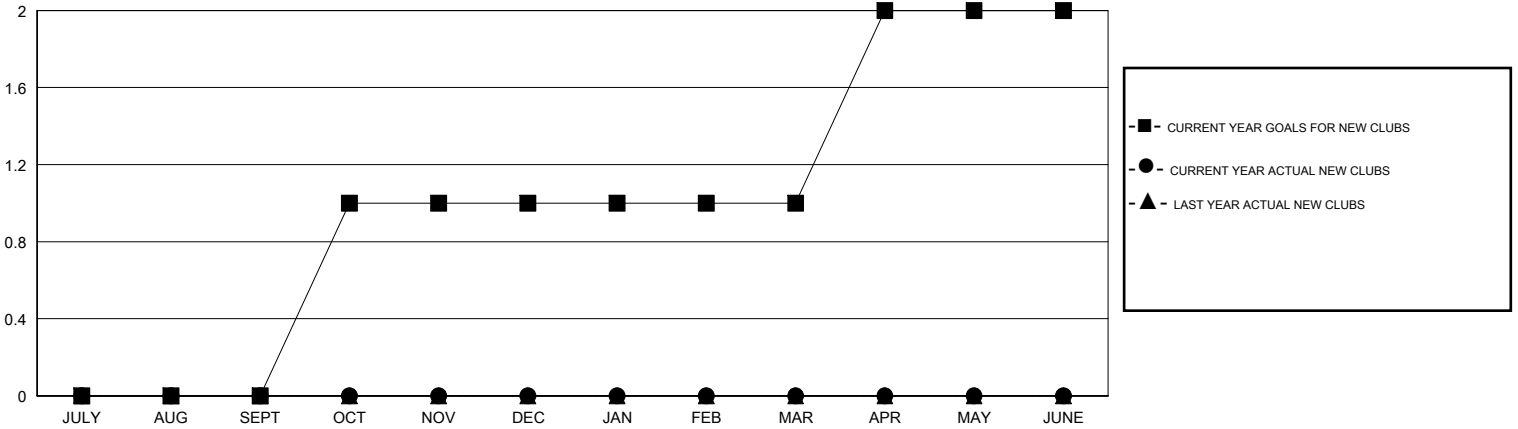
LOCATION ILLINOIS

GMT CA

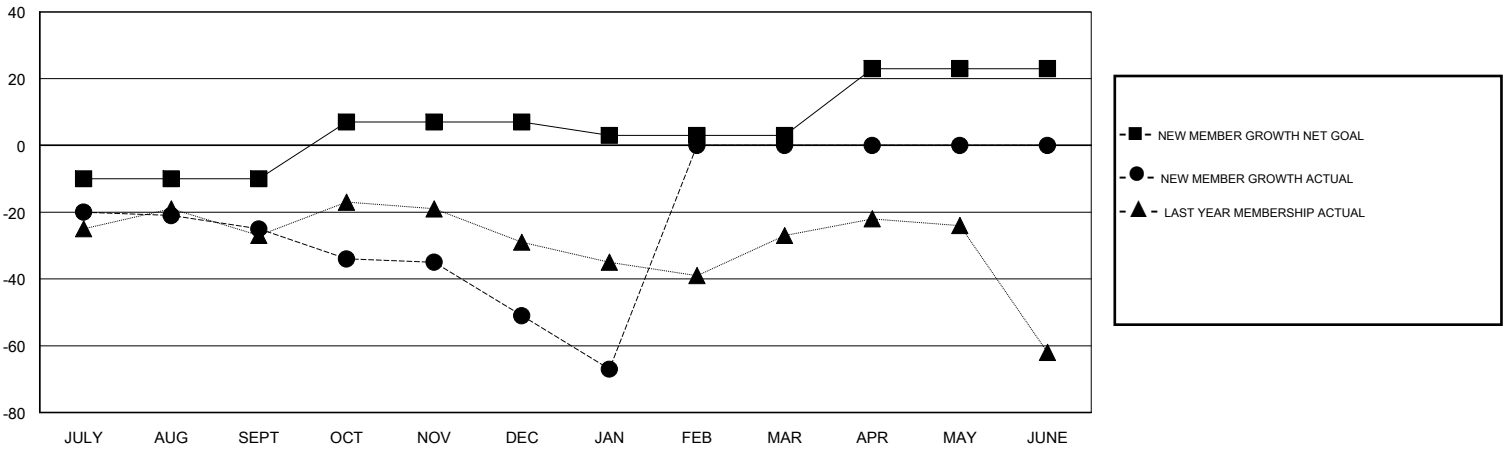
Clubs			
RESULTS FOR 2016-2017			
QUARTER	NEW CLUB GOAL	NEW CLUBS	DROPPED CLUBS
JULY/AUG/SEPT	0	0	0
OCT/NOV/DEC	1	0	0
JAN/FEB/MAR	0	0	0
APR/MAY/JUNE	1	0	0

Members			
RESULTS FOR 2016-2017			
QUARTER	NEW MEMBER GROWTH NET GOAL (not reinstated or transfers)	NEW MEMBER GROWTH ACTUAL (not reinstated or transfers)	DROPPED MEMBERS ACTUAL (including transfers)
JULY/AUG/SEPT	-10	31	56
OCT/NOV/DEC	17	36	62
JAN/FEB/MAR	-4	11	27
APR/MAY/JUNE	20	0	0

GOALS AND ACTUAL NEW CLUBS CUMULATIVE



GOALS AND ACTUAL MEMBERS CUMULATIVE



DROPPED CLUBS: 0	30 CLUBS OF 70 ADDED 1 OR MORE NEW MEMBERS	GENDER DISTRIBUTION
		MALE 1,635 (78.95%)
		FEMALE 436 (21.05%)
DROPPED MEMBERS	CLICK HERE FOR CUMULATIVE MEMBERSHIP DATA	TOTAL FAMILY UNIT MEMBERS 311
DECEASED 18		FAMILY MEMBERS PAYING HALF DUES 158
CLUB CANCELLED 0		
OTHER 127		
TOTAL 145		